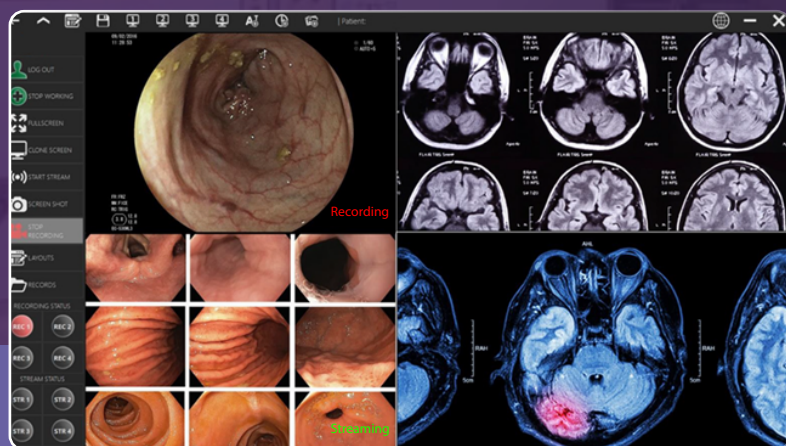


# CureLink™ OR SOFTWARE PLATFORM



**Area of Usage**  
OPERATING ROOM

## CureLink™ OR Software Platform

**Telemedicine System** · OR Application · Management Panel · 4-Channel HDMI Viewer  
· MultiView Layouts · Recording · Live Streaming · Video Call · HIS Integration

CureLink is a two-component clinical software platform designed to run on CureVision OR consoles (VPC-240C, GP-449) in the operating room. The OR Application provides real-time, multi-channel surgical image viewing, flexible layout management, per-channel recording and live streaming, and direct HIS connectivity — all from the OR console display. The web-based Management Panel gives administrators and remote observers secure access to all OR rooms, live broadcasts, video calls, user management, and operation records from any browser on the hospital network.

### TWO COMPONENTS

#### CureLink OR App

- Desktop app on VPC-240C  
Runs on OR console/display

#### Management Panel

- Web server — any browser  
Remote admin & telepresence

### INPUT SOURCES

- HDMI (up to 4 channels)
- SDI (via capture card)
- DVI-D / DVI-A / RGB
- S-Video / Component
- Surgical lamp cameras
- Auto-detection mode

### HIS INTEGRATION

- Filter by modality, patient,  
date Manual work creation  
Patient-linked recording

## CURELINK OR APPLICATION



### Viewer

Displays simultaneous HDMI/SDI input channels on screen. Each channel is independently visible, sized, positioned, and named. Supports HDMI, SDI, DVI-D, S-Video, Component, and Auto-detect source types.



### Full Screen

Make any channel full screen with double-click or ALT-F. Clone any channel to a second display (ALT-T). Adjust per-channel audio volume — device audio or microphone independently.



### 4K60 Routing Flexible MultiView Layouts

Drag-and-drop channel resize and reposition. Save custom screen layouts for reuse. Select from default layouts — choose which channel appears in which position. Delete unwanted layouts. User-friendly drag-and-drop routing interface — select a layout and source, then assign to any destination display with a single gesture.



### Per-Channel Recording (REC 1-4)

Start and stop recording on any of the 4 channels independently. Recordings are linked to patient and operation data. View recordings in built-in video player with timeline navigation and variable playback speed. Visual 'recording' indicator displayed on the channel currently being recorded.



### Live Streaming (STR 1-4)

Broadcast any channel live to the CureLink server. Up to 4 simultaneous streams per room. Remote observers access streams via browser — no specialist client software required. Visual 'stream' indicator displayed on the channel currently being streamed.



### OSD Overlay System

Add up to 16 information layers per channel — text annotations, timestamps, or images. Control position, size, font, color, and transparency. Fully configurable for clinical documentation and teaching. CureLink enables on-screen text and image overlay during telepresence and recording, also allows complete review of recorded content.

## CURELINK MANAGEMENT PANEL



### Multi-Room Dashboard

Overview of all OR rooms — top 5 by broadcast count, user rankings, live broadcast indicators. Active streams shown on dashboard. One-click access to any room's management page.



### Live Stream Monitoring

Monitor up to 4 broadcast channels per room simultaneously from any browser. Watch live surgical video from Channel 1, 2, 3, or 4 — or all channels at once in split-screen view.



### Video Call / Telepresence

Start and end video calls on any active broadcast channel. Invite remote participants by email — private (specific address) or public (link only). Manage invitee lists per room and channel.



### User & Permission Management

Add users with role-based permissions. 17 granular permission types — user definition, snapshot, recording, streaming, video call, operation start, records access, export, room management, and more.



### HIS-Linked Operation Records

Operations started from the OR console link recordings to patient data. View and export operation history. Records browsable per room, per user, per date. PACS-compatible workflow.



### Room Management & Control

Start/stop broadcasts, initiate/end video calls, start/stop recording — remotely from the Management Panel. Room name editing. Device connection status indicator (green = connected / red = offline).

- CureLink OR Application auto-starts at Windows boot and is designed to remain open continuously — maintaining live HIS data exchange at all times.
- The application runs alongside PACS and other clinical software without interference — it can be minimised to the system tray while other applications run in the foreground.
- Management Panel is accessible from any browser on the hospital network — no client installation required. Supports EN, TR, ES, PL, and FR languages.

COMPLETE FEATURE REFERENCE

**CureLink OR Application**

Desktop app · Runs on VPC-240C / GP-449 · Auto-starts at boot

**IMAGE VIEWER**

<b>Input Channels</b>	Up to 4 simultaneous HDMI/video inputs displayed on screen
<b>Supported Sources</b>	HDMI · SDI · DVI-D · DVI-A (RGB) · S-Video · Component (YCbCr) · AUTO
<b>Channel Selection</b>	Click on channel image to select – blue highlight = active selection
<b>Show / Hide Channel</b>	Top menu button · Right-click menu · ALT-H shortcut
<b>Full Screen</b>	Double-click · ALT-F · Right-click – Fullscreen
<b>Clone Screen</b>	Mirror channel to second display – ALT-T · Right-click – Clone Screen
<b>Surgical Lamp Camera</b>	Cameras in surgical lamps connected directly to image inputs

**RECORDING**

<b>Per-Channel Recording</b>	4 independent recording channels (REC 1-4)
<b>Start Recording</b>	ALT-C · Right-click – Start Recording · RECORD SCREEN button
<b>Prerequisite</b>	User must be logged in and operation started (links to patient)
<b>Record Viewer</b>	Built-in viewer: image viewer or video player, timeline navigation, variable speed
<b>Session Records</b>	Retained until user logs out or starts a new work session
<b>Screenshot</b>	ALT-V · Right-click – Screen Shot · SCREEN SHOT button

**ADVANCED CHANNEL SETTINGS**

<b>Channel Name</b>	Configurable display name per channel
<b>Capture Resolution</b>	Select from presets (e.g. 1920x1080)
<b>Frame Rate</b>	Configurable capture frame rate
<b>Note</b>	Must close Recording/Streaming before changing Advanced Settings

**LAYOUT MANAGEMENT**

<b>Channel Resize</b>	Drag edges of channel window · or enter W/H in Channel Properties
<b>Channel Position</b>	Drag and drop · or enter X/Y coordinates in Channel Properties
<b>Audio Control</b>	Two independent sliders per channel: device audio + microphone
<b>Screen Layouts</b>	5 default layouts + custom saved layouts channel assignment configurable
<b>Save Layout</b>	Arrange channels, save layout – reusable in future sessions
<b>Delete Layout</b>	Layout Selection window – X button on layout icon – confirm

**OSD — ON-SCREEN DISPLAY**

<b>OSD Layers</b>	Up to 16 information layers per channel
<b>Content Types</b>	Text annotation · Clock/timestamp (multiple formats) · Image overlay
<b>OSD Properties</b>	Position (X/Y), size (W/H), font type/size/color, background color, transparency
<b>Access</b>	ALT-A · Right-click – OSD Settings · Top menu OSD buttons

**HIS INTEGRATION & OPERATION**

<b>User Login</b>	Required for recording, streaming, screenshot – LOGIN button
<b>Start Work (HIS)</b>	Query HIS by modality, date, patient – select from list
<b>Manual Work</b>	Create manually: patient name, ID, sex, DOB, modality
<b>Operation Linking</b>	Recordings automatically linked to patient/procedure ID
<b>Auto-Restart</b>	Application restarts ~1 min after close – maintains HIS connection
<b>PACS Compatibility</b>	Runs alongside PACS software – does not interfere

**LIVE STREAMING / BROADCAST**

<b>Simultaneous Streams</b>	Up to 4 channels streamed simultaneously (STR 1-4)
<b>Start Broadcast</b>	ALT-S · Right-click – Start Broadcast START BROADCAST button
<b>Server Access</b>	Browser login from any networked computer – Room Mgmt – Streams
<b>Stream Monitoring</b>	Select room and channel – or view all 4 channels simultaneously

CureLink Management Panel	
ACCESS & NAVIGATION	
Login URL	https://yourdomain:8080/Home/login (any browser, any networked device)
Languages	English · Turkish · Spanish · Polish · French
Dashboard	Active streams/calls, top-5 rooms by broadcast count, user rankings, invitee list
Live Indicator	Active broadcasts shown on dashboard — click to navigate to that room
USER MANAGEMENT	
Add Users	New button — credentials created by Çizgi Teknoloji (user can change password)
Permission Types	17 individual permissions per user — granular role-based access control
Permissions List	User Definition · Save Snapshot · Recording · Start/Stop Stream · Watch Stream · Start/End Video Call · Connect to Video Call · Start Study · Start Manual Work · View Records · View All Records · Export Records · Export All Records · View Transaction History · Export Transaction History · Adjust Picture & Sound · Room Management
OPERATION & RECORDS	
Recording Start	Active when broadcast is active — devices handle recording automatically
Patient Linking	Recording must be linked to a patient — Start Operation required at OR console first
View Records	Per session, per room, per user — image viewer or video player
Export Records	Export individual or all records per authorised user
Operation History	Full transaction history — viewable and exportable per permissions
PACS Export	Records available for PACS system integration

ROOM MANAGEMENT	
Room List	Room ID, Name, IP Address, Client ID, Date of Creation, Stream status, Device status
Device Status	Green icon = connected · Red icon = offline/not connected
Room Name	Editable from Room Management index page
Remote Control	Start/stop broadcast · Initiate/end video call · Start/stop recording — from panel
BROADCAST MONITORING	
Channels per Room	Up to 4 channels · view individually or all 4 simultaneously
Watch Stream	Select Room — Select Channel (1-4 or All) — Watch
Multi-channel View	All 4 channels displayed simultaneously in quad-view layout
Stream Status	Active stream buttons light green — click to navigate to broadcast
VIDEO CALL / TELEPRESENCE	
Initiate Call	Start a Video Call from the Streams page — requires active broadcast on that channel
Join Call	Click 'Start a Video Call' button — opens in browser
Prerequisite	Active broadcast must be running on the target channel before initiating call
INVITEE MANAGEMENT	
Add Invitees	Enter guest email addresses — assign to specific channels and/or video call
Access Types	Private (email invitation) · Public (link only)
Schedule	Set start and end date for broadcast access
Email Notification	Invitation automatically emailed — resend available via Send Email button
Invitee List	Saved in table — view details, edit, delete, upcoming and past lists
TECHNICAL	
Platform	Web application — no client installation required
Server Port	Default: 8080 (configurable)
Authentication	Username/password